



Recognised by the IOC - Member SportAccord, ARISF, IWGA and IMGA



Appendix

Dress regulations
Reimbursement of expenses (B 5) Rules for
Competition Number Cards Adjudicators Code of
Conduct and Standard of Ethics
Athletes Code of Conduct

Appendix WDSF Dress Regulations

These *Regulations* are part of the *WDSF Competition Rules* by reference in Rule E.10.

Authority and Applicability

These Dress Regulations apply to all competitions granted by WDSF and according to the decision of the WDSF Annual General Meeting, form part of the competition rules of all WDSF Member bodies provided always that WDSF Member bodies may impose additional dress restrictions at their own discretion for national non-WDSF-named events.

The WDSF Presidium retains the authority to impose specific additional or general Dress restrictions or otherwise amend or allow exemptions, for specific events.

GENERAL

1. Female athletes may not wear shorts, culottes or leotards alone but they can be worn with a skirt. Female Athletes must wear a skirt, dress or long trousers. Skirts and dresses must create Characteristic shape for each discipline (ST and LA) (shape area). In Standard Dress the lady's or girl's dress must have a long skirt which at minimum covers both her knees; if the skirt is split it must not be split higher than the knee. In Latin Dress the lady's or girl's dress must have a skirt made of fabric, fringe, feathers, beads or any other suitable material, and can be split or open on the sides, provided always that the skirt must completely cover the panties in front and in the back when standing still.
2. An athlete's costume must cover the intimate parts of that athlete's body ("the intimacy area").
3. A lady's or girl's dress and makeup must be appropriate for her age and the level of competition which is being danced.
4. In order to present a more modern and up-to-date image of DanceSport, a suit jacket with collared shirt and tie, or a vest with collared shirt and tie is recommended for the Junior II, Youth, Adult and Senior age groups.



Recognised by the IOC - Member SportAccord, ARISF, IWGA and IMGA



5. Athletes may not use religious symbols as decoration or decoration jewellery but may use religious symbols as part of their personal jewellery.
6. The Chairperson has full authority to require any athlete to remove an item of jewellery or dress at any time if in the Chairperson's opinion that the item of jewellery or dress poses a potential danger to that athlete or to other competitors.
7. An athlete may compete wearing a costume which is required in a lower category.
8. The Chairperson may suspend from competition any athlete who fails to comply with these guidelines or fails to comply with the Chairperson's directions at a competition, and may direct the Scrutineer not to record the marks given to such an athlete in any competition in which the athlete fails so to comply.

Good Taste Rule

Any use of material or colour or construction or other contrivance that gives the appearance of non compliance with these dress rules, even though there is no breach of the literal wording of these rules, will be a breach of these rules if so determined by the Chairperson of Adjudicators.

SANCTIONS

If a couple is not dressed in accordance with this Dress Regulation and receives a warning from the Chairperson of adjudicators, they must comply with the regulation or face disqualification

IMMEDIATELY BY THE CHAIRPERSON of the WDSF Sports Director, if present. The Presidium can impose additional sanctions including suspension from competitions for repeat offenders.

DEFINITIONS OF TERMS

No restriction (NR) – there are no restrictions in this matter

Not allowed (NA), Only allowed (OA),

Intimacy area (IA) – body zones, which must be covered by non transparent materials or transparent materials lined with non transparent materials. If skin colour is used in an athlete's costume, it must be SwD.



Recognised by the IOC - Member SportAccord, ARISF, IWGA and IMGA

Rules

For the Female partner:

- tangas are **NA**.
- skin colours panties are **NA**.
- Breasts **must** be covered
- the distance between bra cups **must** be **less than 5 cm**.

Shape area (SA) – minimum area which **must** be covered. Transparent materials are allowed in these areas, any colour is allowed.

Basic material – creates shape of the dress

- with light effects (metallic, glitter, sequins, ...)
- without light effects

Decoration – anything fixed on the basic material, hair, skin:

- with light effects (rhinestones, sequins, beads, pearls, ...)
- without light effects (feathers, flowers, bows, fringe, lace applications, ribbons, ...)

Tie clips, studs, cufflinks, buckles are not defined as decorations.

Hip Line (HL) – panties top line (height)

= straight horizontal line, the top of the cleft or line between buttocks muscles (intergluteal line) **must not** be visible.

Panty Line (PL) – panties bottom line (height)

- o back side – whole buttocks are covered
- o in the front – follows line between flexed leg and body

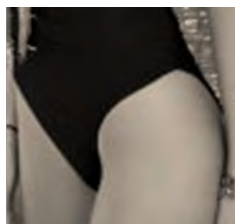
The following illustration shows the minimum degree of coverage required by this Rule:





Recognised by the IOC - Member SportAccord, ARISF, IWGA and IMGA

The following illustration is an example of a degree of exposure which is not permitted under this Rule:



The distance between HL and PL on the side must be **more than 5 cm**

Man's Top Opening Point (TOP) – point, to which top or shirt can be opened

= centre of the belt buckle or centre of the trousers top line

Colours




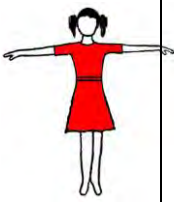
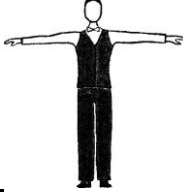
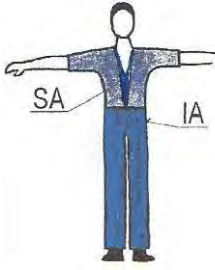
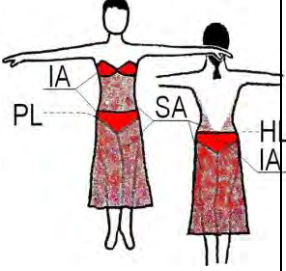
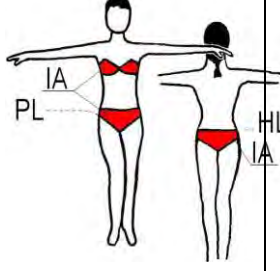
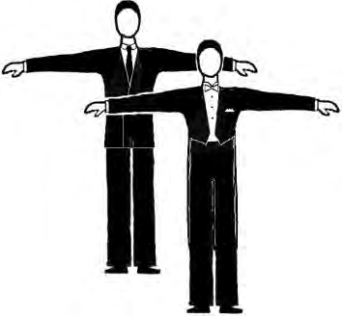
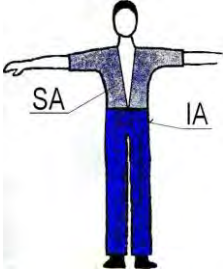
- **black only (Bo)**
- **black (B)** – means black and midnight blue
- **white (W)**
- **skin colour (S)** the same colour as the dancer's skin during the competition (with tan)
- **skin colour with decoration (SwD)**
- **any colour (C)** – any colour including mixed colours
- **any colour except skin colour (CnS)**
- **one colour except skin colour (C1nS)**

Long Sleeves/ed (LS) – length to the wrist, rolled up sleeves is NA

Make-up – includes face make-up, artificial tan, artificial nails, and artificial eye lashes.

Decoration jewellery – jewellery designed to be a part of a dance dress

1. DANCE DRESS – Only Allowed

Partner Disc.	Male		Female							
	ST	LA	ST	C1nS	LA					
Juvenile	<p>W LS shirt or W/Bo polo neck Bo trousers/satin side stripe allowed Bo tie/bow tie Bo socks</p> 		<p>W blouse leotard or T shirt Bo skirt</p> 	<p>simple C1nS dress + panties</p> 	<p>C1nS leotard with same colour skirt attached</p> 	cuts and details – see appendix I		cuts and details – see appendix II		
Junior I	<p>W LS shirt or W/Bo LS polo neck top Bo vest optional Bo trousers W bow tie to be worn with wing collared shirt B tie to be worn with plain shirt Bo socks</p> 		<p>C shirt/top (tucked in or outside)TOP-breastbone CnS trousers</p> 	<p>Competition dress JI –CnS others – C</p> 		<p>Competition dress JI –CnS others – C</p> 				
Junior II Youth Adult Senior	<p>B Jacket suit (B trousers B jacket W shirt B tie Or W tail shirt W bow tie)</p> <p>B Tail suit (B trousers B tails W waistcoat W tail shirt W bow tie)</p> 		<p>C Shirt/Top CnS trousers</p> 	<p>Two piece dresses NA</p> <p>Two piece dresses are allowed, but the top must not be a bikini top only</p>						

2. DECORATIONS, LIGHT EFFECTS

Partner Disc.	Male		Female	
	ST	LA	ST	LA
Juv	Any decorations – NA Basic materials with light effects - NA		Any decorations – NA Basic materials with light effects - NA	
Jun I			Decoration with light effects – NA (Decoration without light effects is allowed). Basic materials with light effects – NA	
Jun II – Sen	NR			

3. SHOES, SOCKS, TIGHTS

Partner Disc.	Male		Female	
	ST	LA	ST	LA
Juv	Heel: may be max 2,5 cm B socks must be worn		Heel: block, may be max 3,5cm C short socks are allowed Tights: skin colour - OA , mesh - NA	
Jun I	Shoes: NR		Heel: may be max 5 cm short socks are allowed tights: mesh - NA	
Jun II – Sen			NR	

4. HAIRSTYLES

Partner Disc.	Male		Female	
	ST	LA	ST	LA
Juv	If the hair is long it must be worn in a pony tail		Decoration, artificial hair parts and coloured hairspray - NA	
Jun I			Decoration with light effects and coloured hairspray – NA (Decoration without light effects are allowed)	
Jun II Sen			NR	

5. MAKE-UP					
Partner Disc.	Male			Female	
	ST	LA	ST	LA	LA
Juv, Jun I	Make-up - NA				
Jun II – Sen	NR				

6. DECORATION JEWELLERY (not personally jewellery)					
Partner Disc.	Male			Female	
	ST	LA	ST	LA	LA
Juv	Decoration jewellery - NA				
Jun I	Decoration jewellery with light effects – NA (Decoration jewellery without light effects are allowed)				
Jun II – Sen	NR				

Appendix 1: Juvenile Male Dress

Top

- W plain long sleeved shirt or W/Bo polo neck top
- shiny or patterned materials - NA
- shirt wing collar - NA
- rolled up sleeves -NA
- must be tucked in



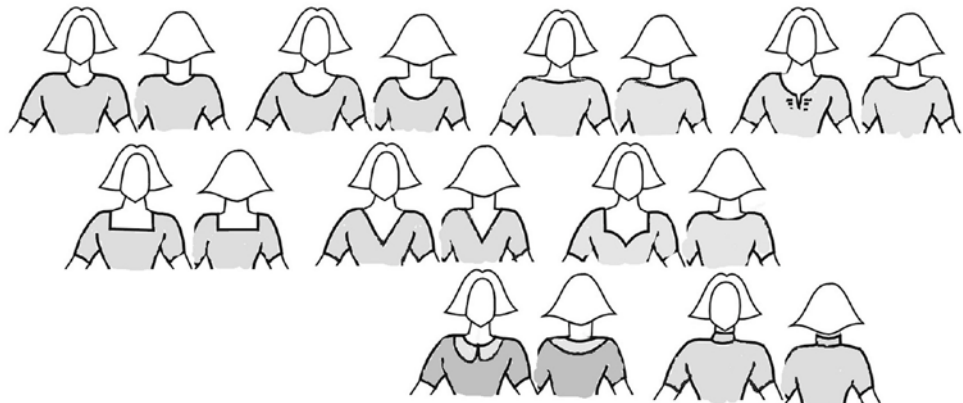
Trousers

- shiny or patterned materials - NA
- side satin stripe allowed

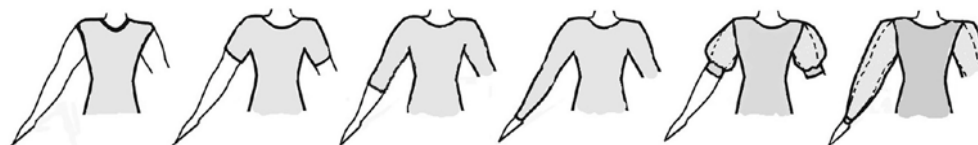
Appendix 2: Juvenile Female Dress

Combination of different materials in the same colour is allowed. If transparent (see through) materials are used, they must be lined with a non-transparent material in the same colour. Draping and pleating is allowed.

A. Necklines – allowed cuts, others - NA:

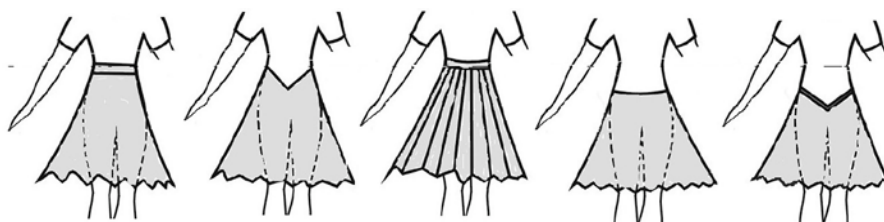


B. Sleeves – allowed cuts, others - NA:



C. Skirts:

- plain or pleated, made of minimum 1 to maximum 3 half circles - **OA**, one simple circular underskirt allowed, bigger underskirt - **NA**.
- frills on the skirt or the underskirt, boning, soft boning or fishing line used in the hem of the skirt – **NA**
- length **must not** be more than 10 cm above the knee and not longer than just below the kneecap.
- allowed cuts, others - **NA**:



2. new styles that are allowed



Examples:

